

**WOHNUNGEN**

**TYP 2:** 2-Zi. -Whg  
pro Etage = 225 qm

**TOTAL= 2025 qm**

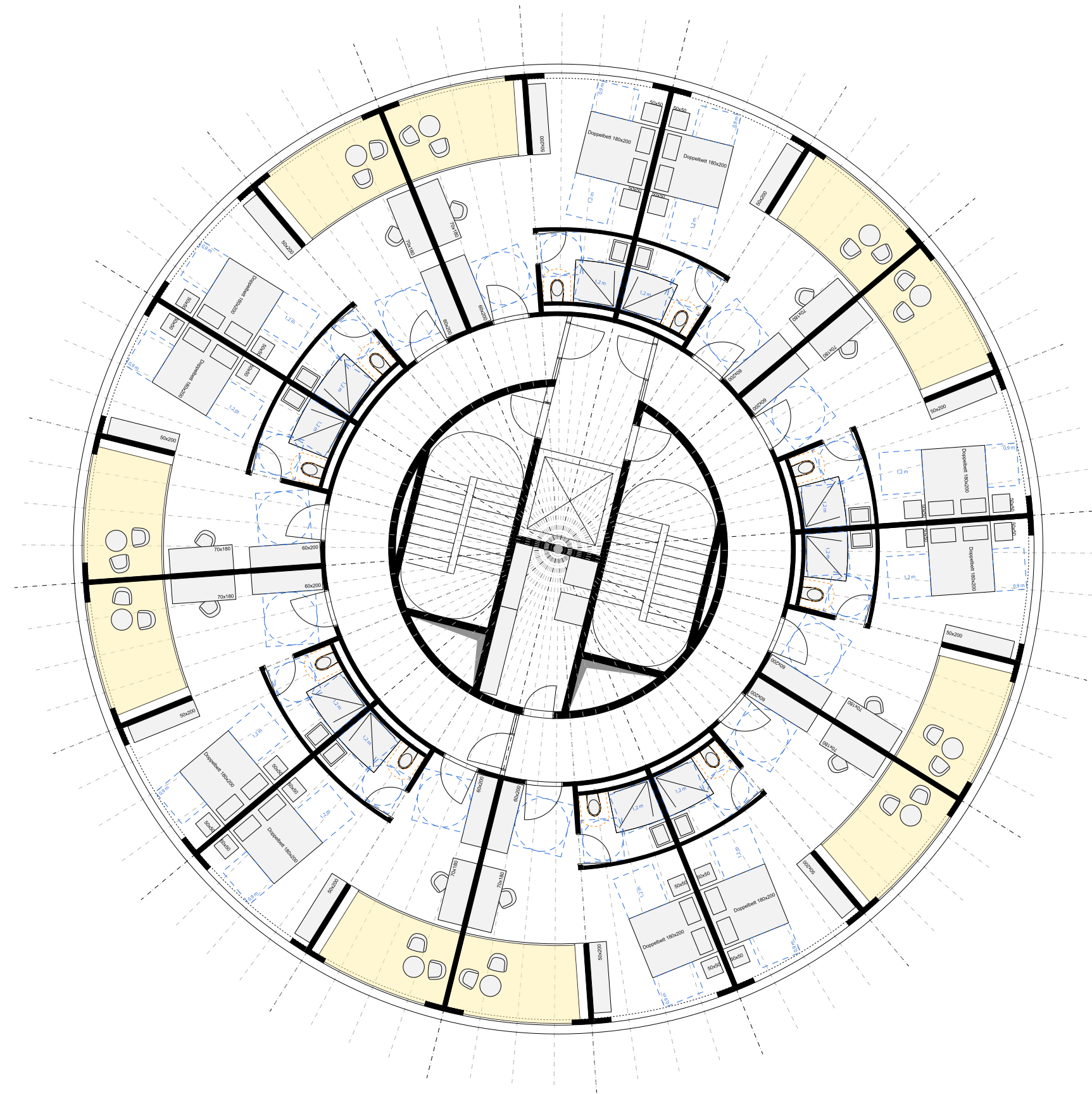
**TYP 3:** 3-Zi. -Whg  
pro Etage = 100 qm

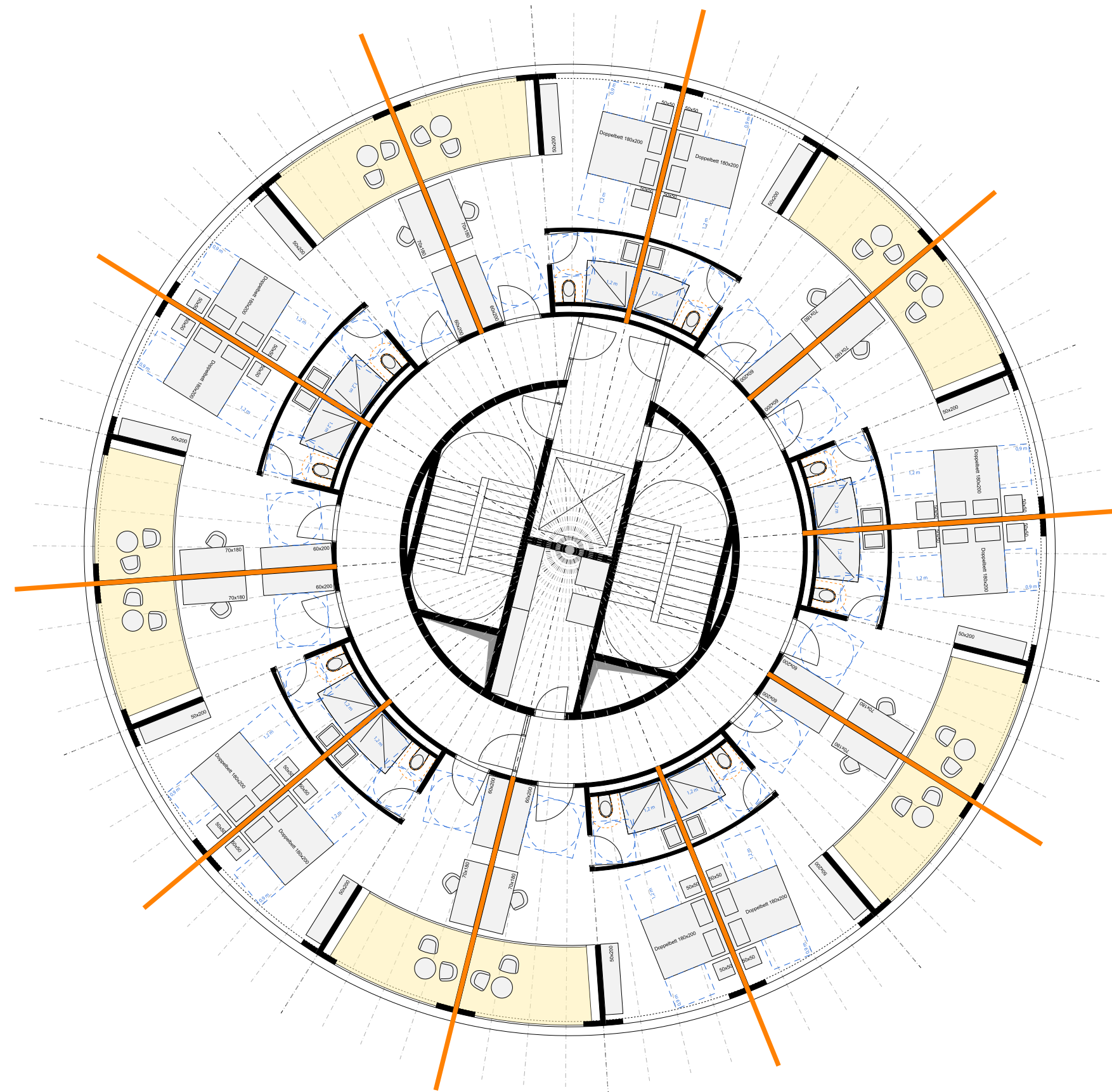
**TOTAL= 900 qm**

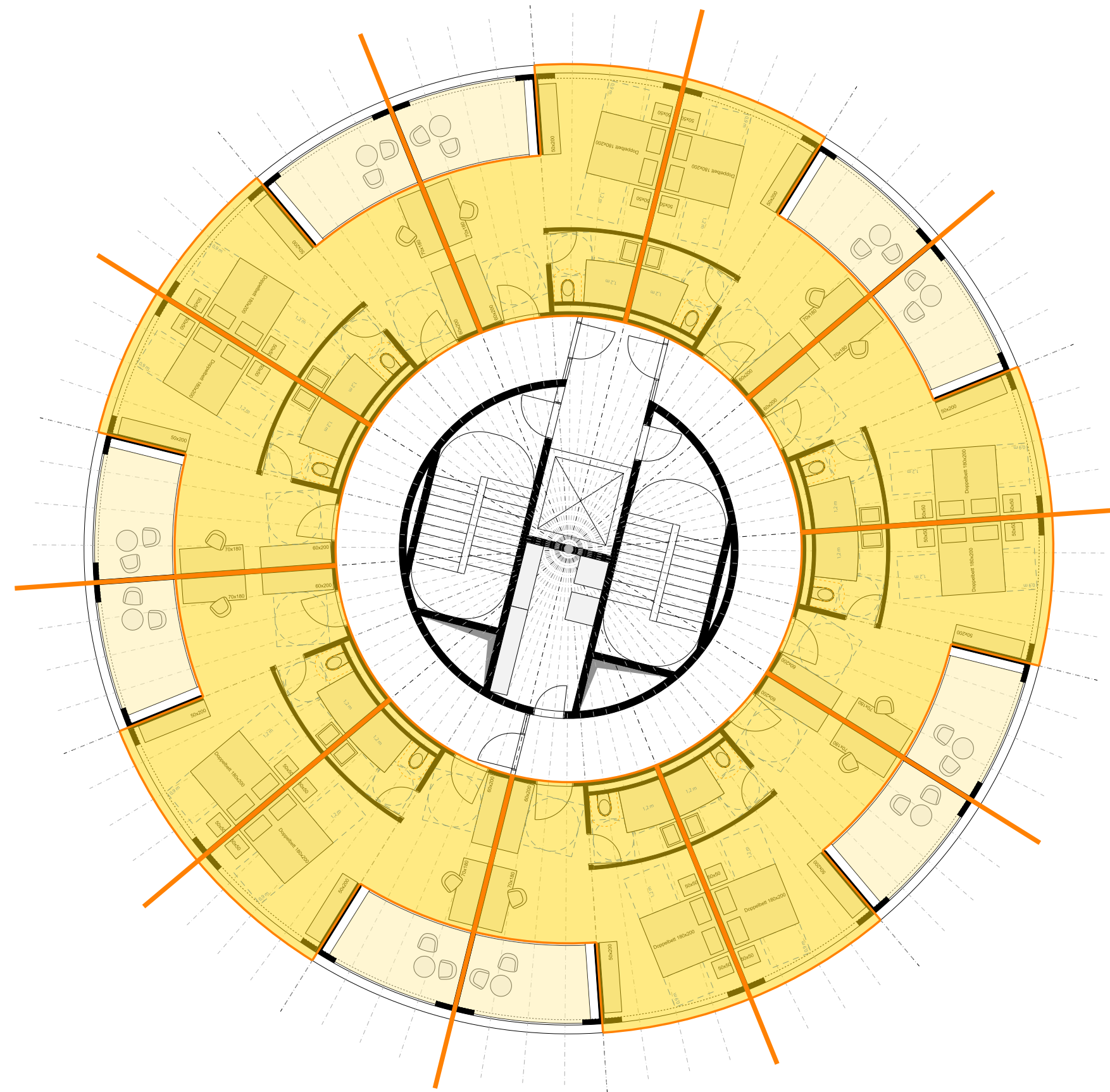
**TYP 4:** 4-Zi. -Whg  
pro Etage = 125 qm

**TOTAL= 1125 qm**

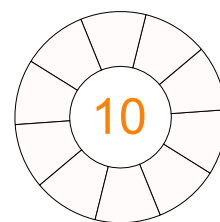
**GESAMTFLÄCHE = 4050 qm**



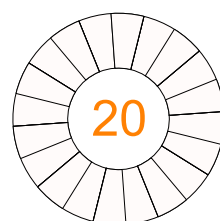




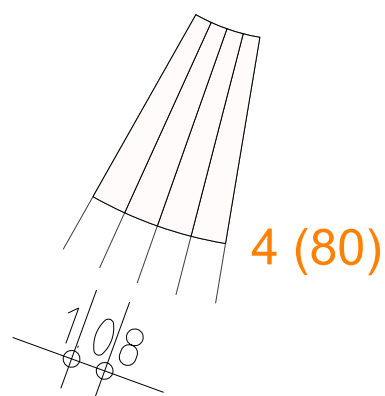
Hotel



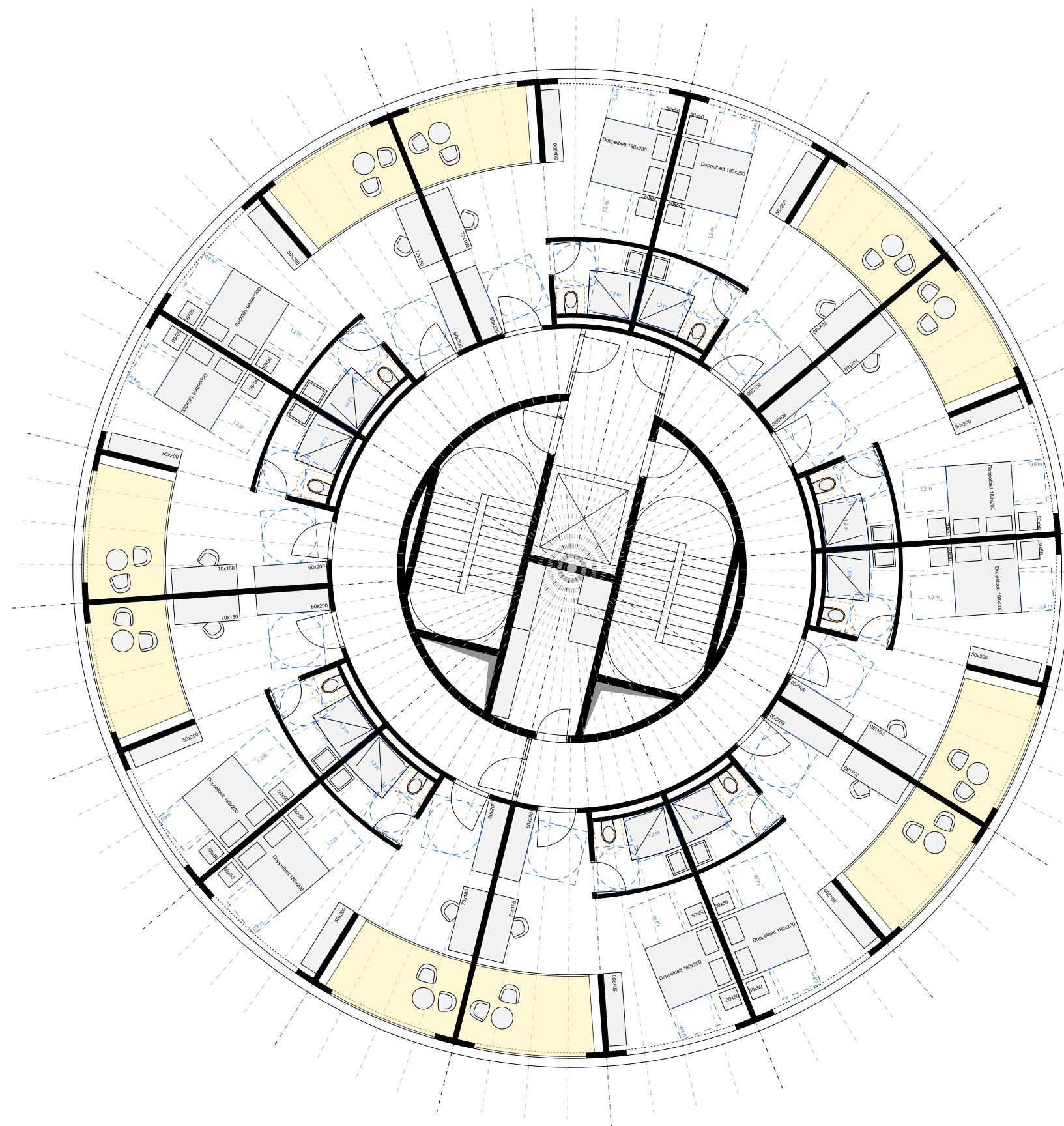
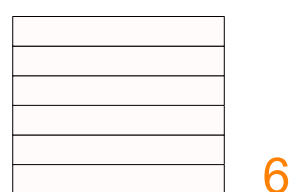
Module



Grid



Etagen



**HOTEL**

**INNENFLÄCHEN**

33.4 qm  
pro Etage = 334 qm

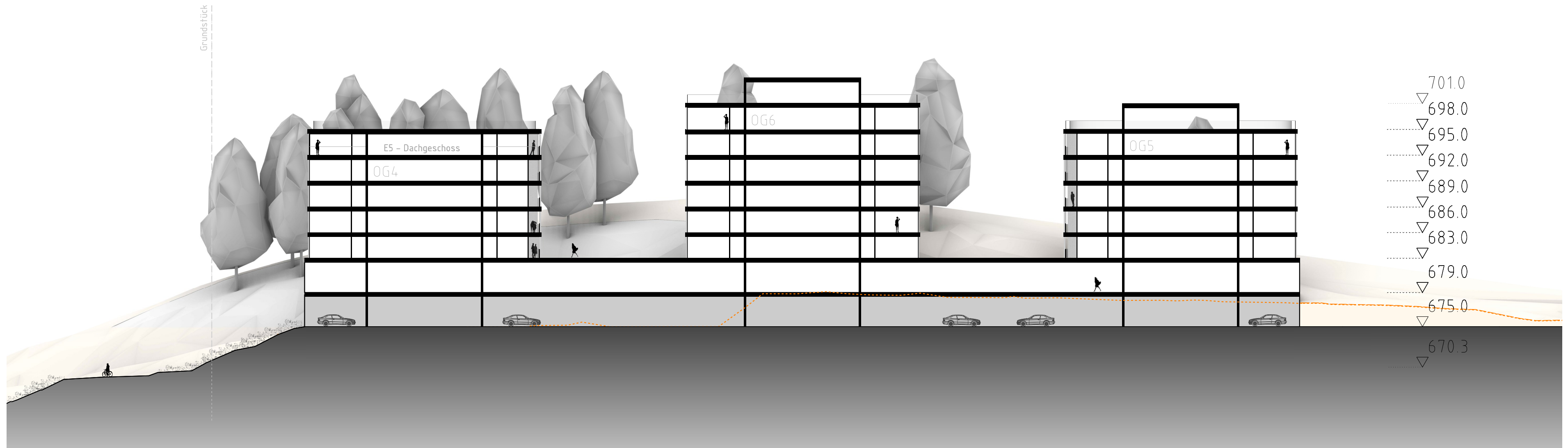
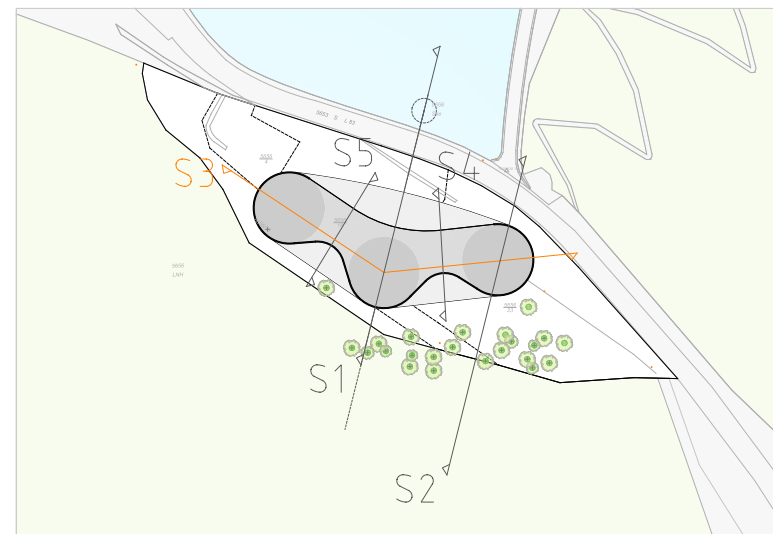
TOTAL= 2004 qm

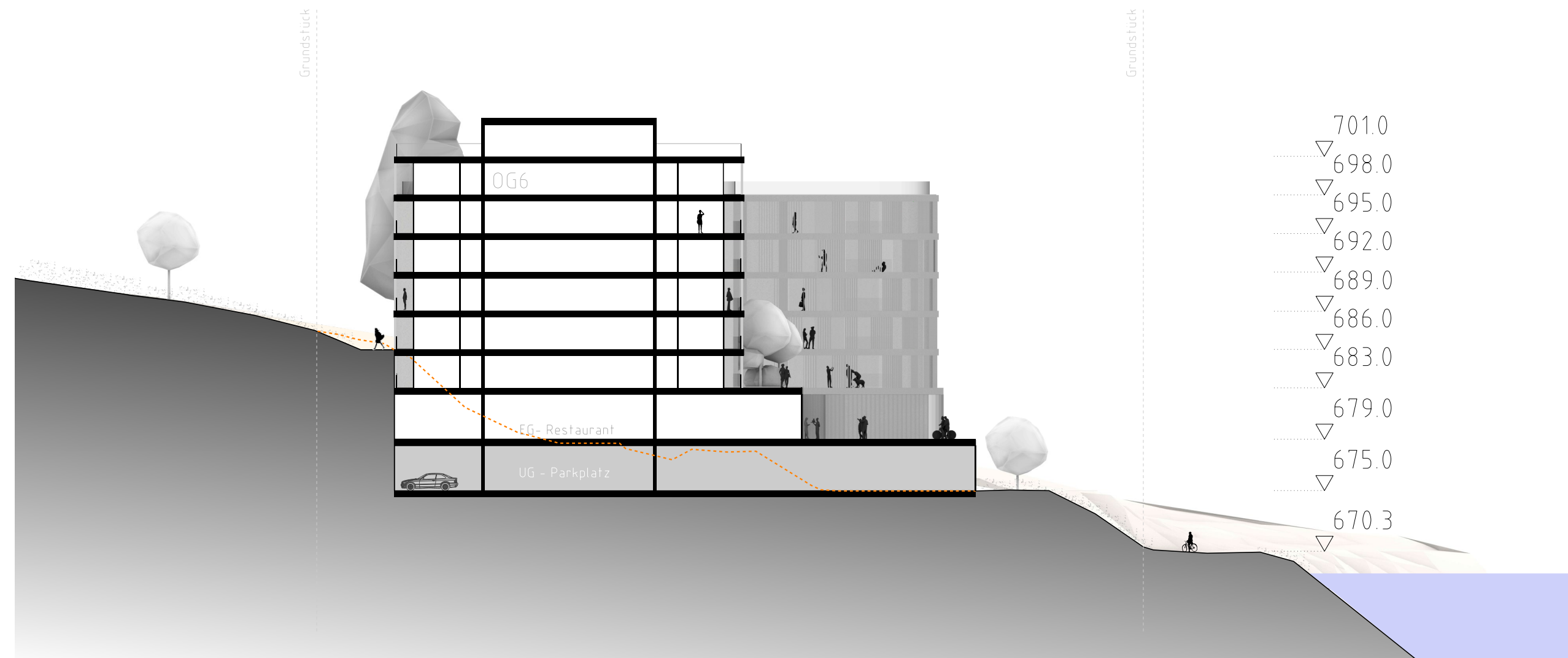
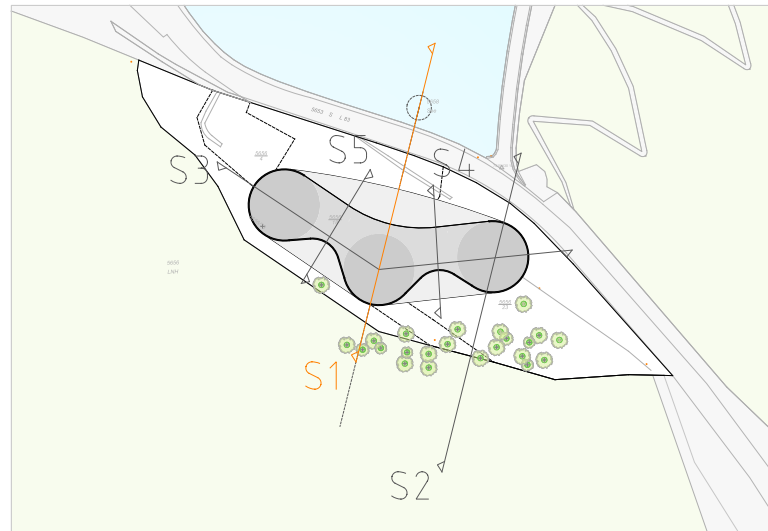
**LOGGIA**

6.7 qm  
pro Etage = 67 qm

TOTAL= 402 qm

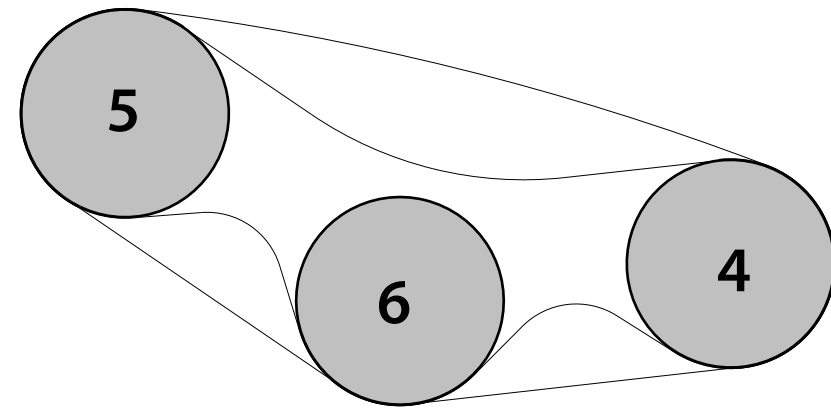
**GESAMTFLÄCHE = 2406 qm**



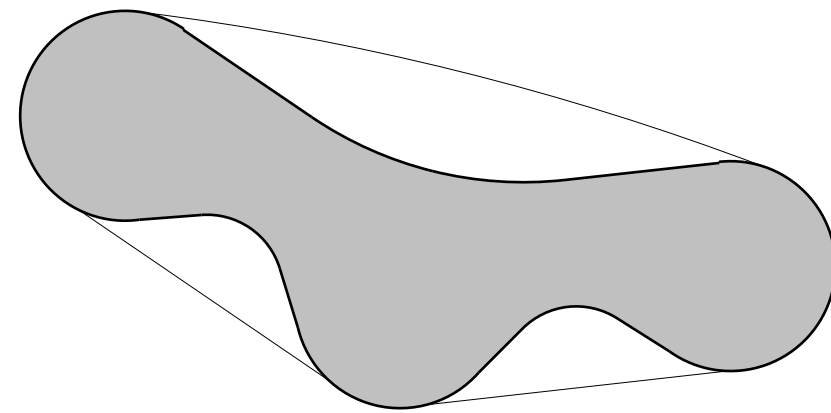




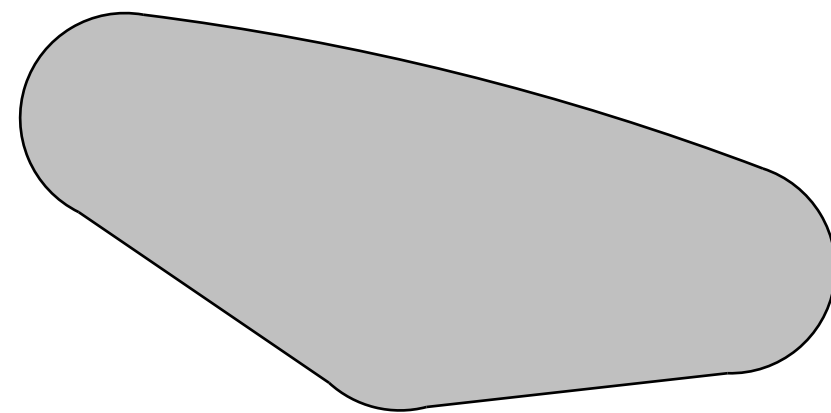




**OG: 8.875qm**



**EG: 2.625qm**



**UG: 3.725qm**

**EG - OG: 1150qm**

